



## Roxy Paine Project

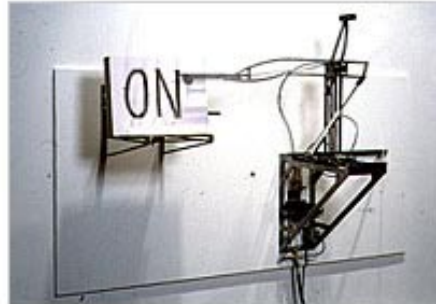
My brother, a well known artist in New York City, asked me to help him with an early project using GPS. I performed all the technical work with a donated GPS unit. The project was entitled, "Where I'm At", and linked the mobile GPS unit to a cell phone which called in periodically and mapped his position on a giant map of New York City. The translation of the GPS coordinates to xy data for the lazer pointer was quite complex and was programmed in Pascal.

### **Roxy Paine**

**April 29 – June 3, 1995**



Placard Flinger, 1995  
steel, pneumatics, cardboard, ink  
48 x 60 x 24 inches



Placard Flinger, 1995  
(detail)



Plug-in Painting, 1995  
linen, plastic, aluminum, with 39 moulded brushstrokes  
120 x 72 x 4 inches



Where I'm At, 1993-95  
black and white photograph, desk, computer with laser pointer,  
GPS unit, cellular phone  
photo: 96 x 96 inches  
desk: 30 x 30 x 60 inches

Above Project: "Where I'm At" bottom right.

## Camp 4 mapping project.

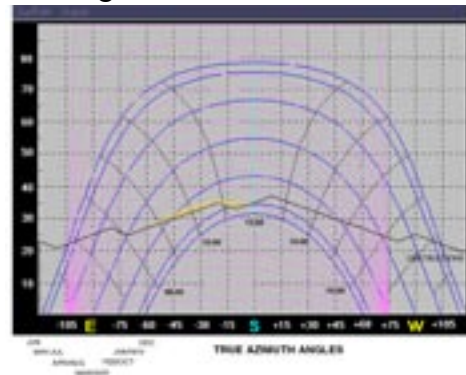
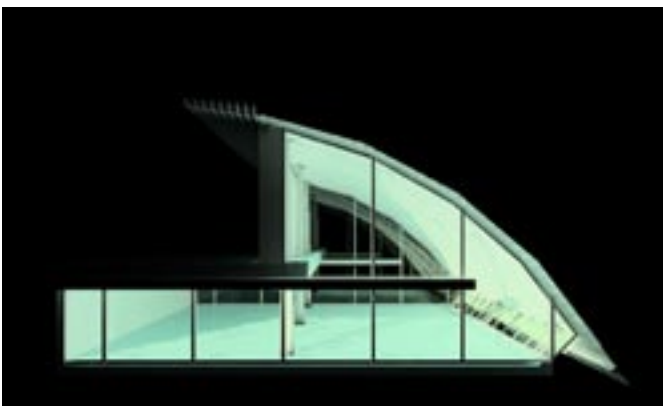
On another project, I was asked to provide a map of the climber's campground in Camp 4. Below is the "favorite places" map. Below is my sketch provided.



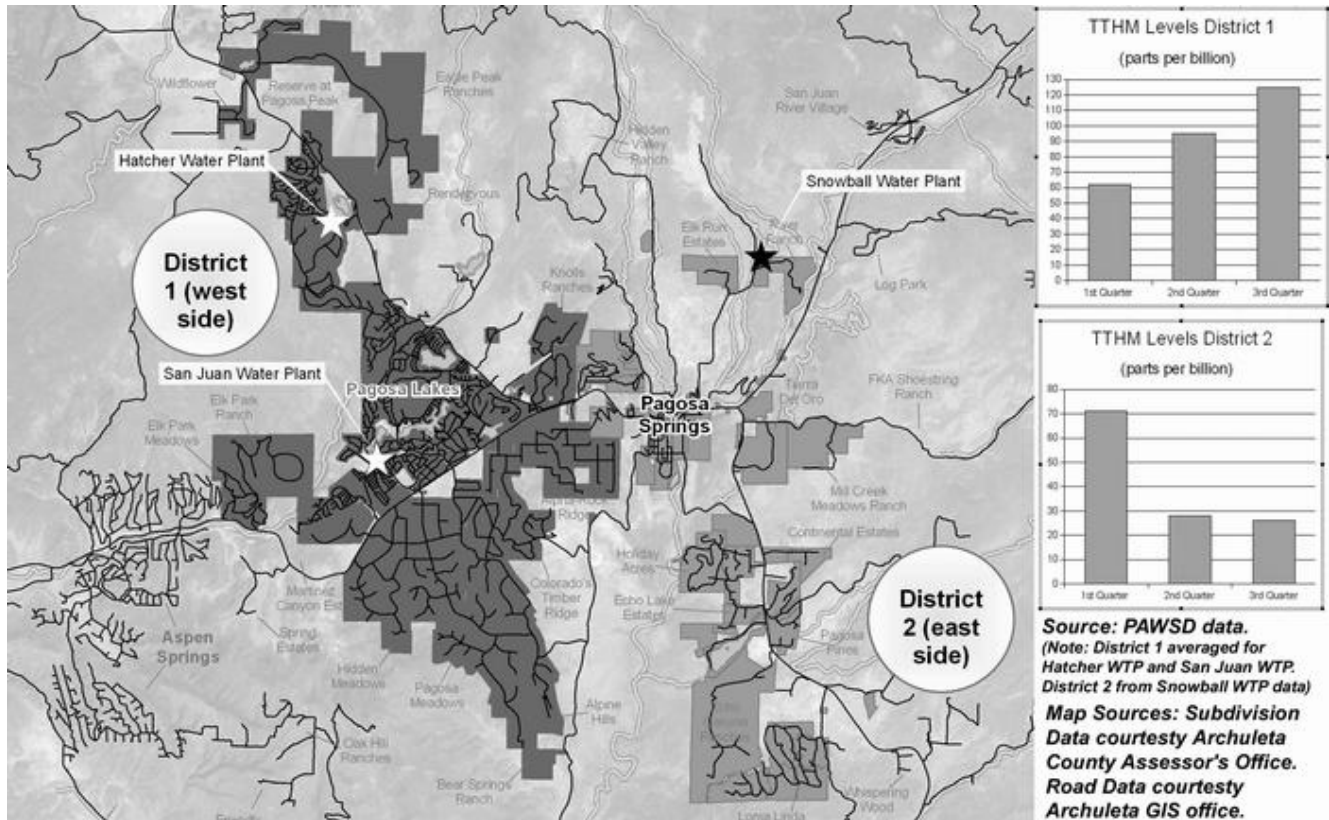
Left: Middendorf's "Favorite Places" map of Camp 4 which was instrumental in the legal argument which helped prevent a major area of Yosemite Valley from becoming developed.

## Various Harvard Projects:

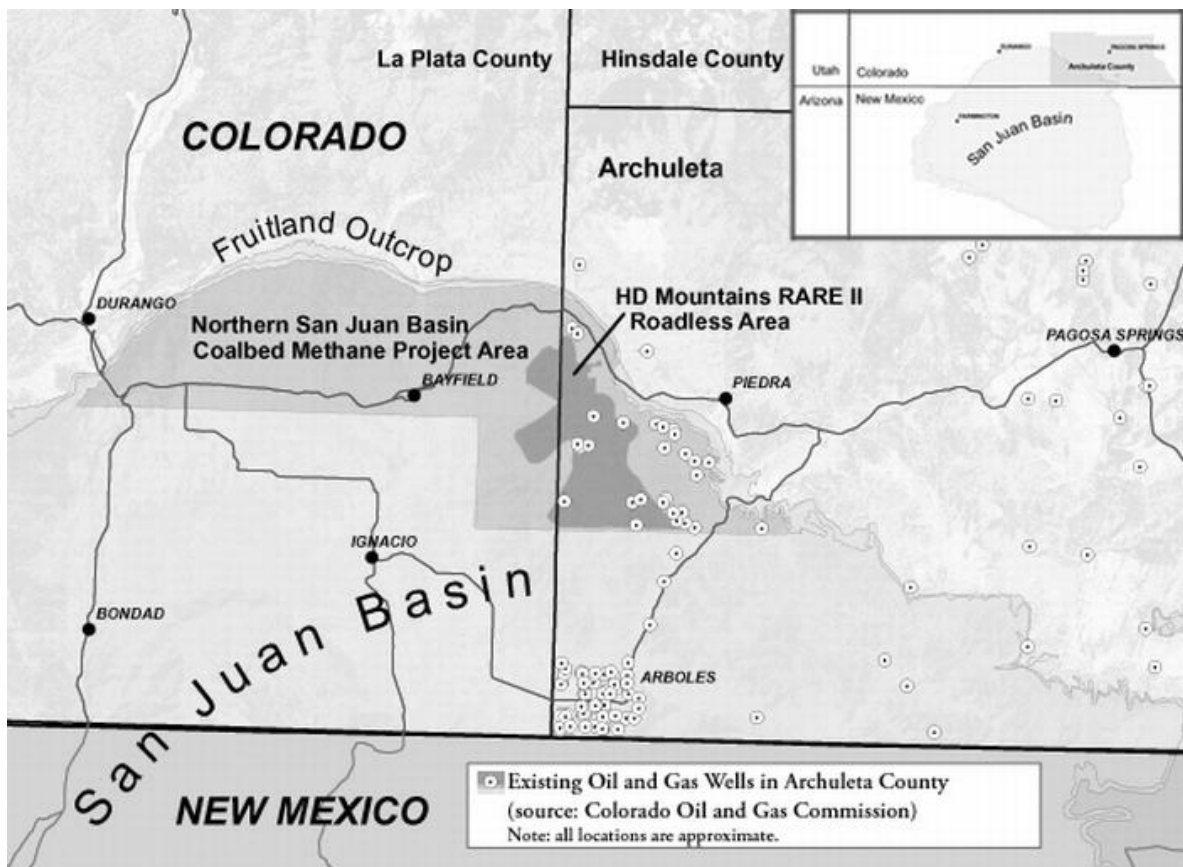
During my Master's Degree at the Harvard Graduate School of Design, we used GPS in several projects. Below left is a lightscape model digitally built using Studio3D and Lightscape using specs on a Richard Roger's Building. The GPS was used to accurately position the location for sun/shade analysis. Several other projects (not shown) used GPS to build accurate base models for architectural designs.



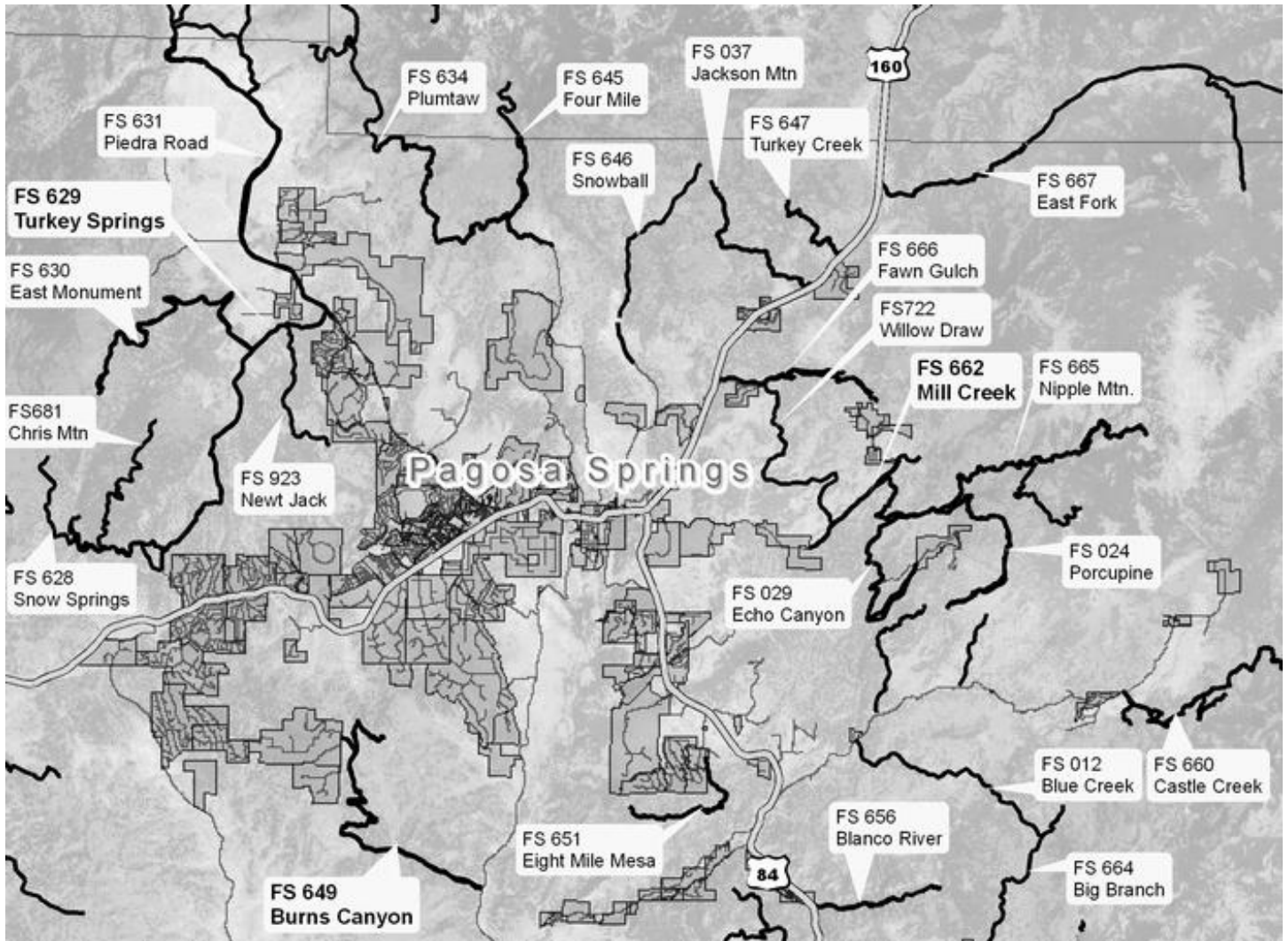
Selected Maps created for the Pagosa Sun Newspaper to illustrate articles:



Above: Water Map showing districts with unhealthy TTHM levels.



Above: Oil and Gas Locations in Archuleta County, Colorado



Above: A map showing local names for Forest Service Roads around Pagosa Springs, Colorado